

# GENIO CHAIR & LOUNGE

PRODUCT DATA SHEET

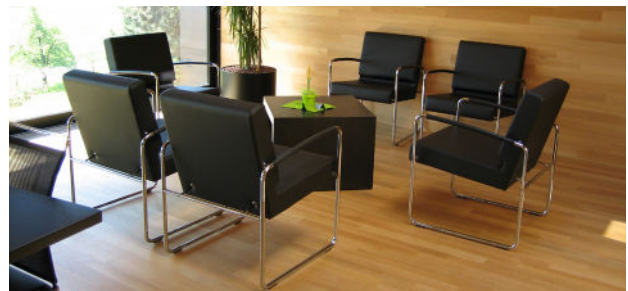
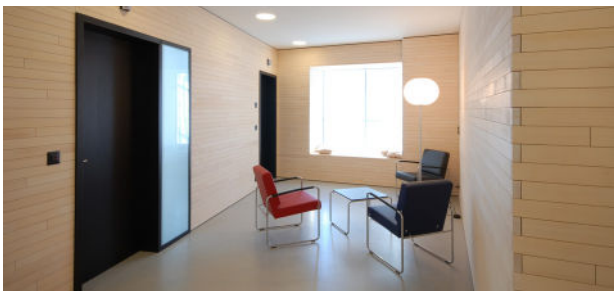


# GENIO CHAIR & LOUNGE

DESIGN: GREUTMANN BOLZERN, 2004

---

The Genio chair is an ideal comfort chair for meetings and administrative areas. With very high seating comfort and easy to clean edges and structure, the Genio chair offers a high end solution for meeting rooms. Available also as a lounge family.



## TECHNICAL DATA

---

### CONSTRUCTION

Tubular steel side frame 18/2 mm, curved

Seat and back substructure made from oriented strand boards with multilayer foam padding

---

### CONFIGURATIONS

Standard: Upholstered seat and back

Option: Flame retardant foam padding

---

### ARMRESTS

Armrests in metal, plastic covers.

EPDM rubber armrest covers, 380 mm long, diameter 19 mm, black non-staining (65 +/-5 Shore)

---

### METAL SURFACE TREATMENT

Chromed

---

### GLIDES

Standard: Plastic

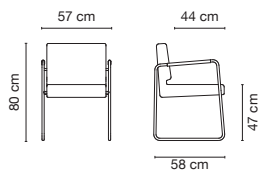
Option: Felt

---

### DIMENSIONS

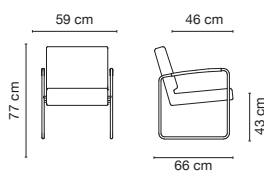
---

Chair



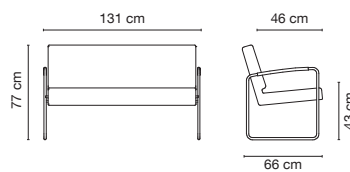
Weight	9.8 kg
Fabric need	1.45 - 1.6 lfm.
Leather need	2.6 m <sup>2</sup>

Lounge



Weight	9.7 kg
Fabric need	1.45 lfm.
Leather need	2.6 m <sup>2</sup>

2-seater



Weight	26.1 kg
Fabric need	2.45 lfm.
Leather need	5.2 m <sup>2</sup>

## GENIO OVERVIEW

---



---

Chair · Lounge · Lounge 2-seater



---

Details