

# TILA

PRODUCT DATA SHEET



# TILA

DESIGN: CHRISTOPH HINDERMANN, 2004

---

The ultra-slim Tila is a clever, filigree, and innovative solution for seminar, with outstanding stackability up to 30 chairs. It is an optimal solution for interior flexibility. Available in beech or oak with row connections, optional upholstered seat and back, and with writing tablet.



## TECHNICAL DATA

---

### CONSTRUCTION

---

U-shaped steel wire frame, Ø 12 mm, welded  
Moulded plywood seat and back, 6-8-ply  
Hidden seat fastening using expanding sleeves, foam-padded stacking bases  
Back fastened to side bars using hidden connector  
Stacking base, PUR black, foam padding

---

### CONFIGURATIONS

---

Standard: Moulded plywood seat and back in beech  
Option: Perforated seat  
Upholstered seat  
Upholstered seat and back  
Flame-retardant foam padding  
Writing tablet (minimum order quantity 100 pieces)

---

### ARMRESTS

---

Steel wire armrests, Ø 12 mm, curved with synthetic rubber cover, black non-staining (65 +/-5 Shore)

---

### TYPE OF WOOD

---

Standard: Beech  
On request: Oak (minimum order quantity 100 pieces)  
Option: CPL, according to standard collection

---

### OBERFLÄCHENBEHANDLUNG METALLTEILE

---

Chromed

---

### WOOD SURFACE TREATMENT

---

Stained with highly light-fast, water-based stain (dye/pigment) on request.  
Coated with 2-component, water-based polyurethane lacquer that has excellent light-fast properties and acts as a UV filter.  
Meets highest standards according to DIN 68861 and complies with increased fire safety requirements (flame-retardant).  
The same applies to solvent-based coatings used on oak.

---

### GLIDES

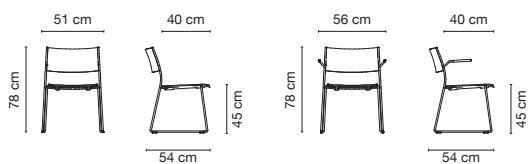
---

Standard: Plastic  
Option: Felt

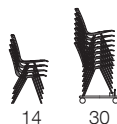
---

### DIMENSIONS

---



Weight 6 kg  
Fabric need 0.50 - 0.55 lfm.  
Leather need 0.35 - 0.7 m<sup>2</sup>  
Load up to 110 kg  
Stackable Yes



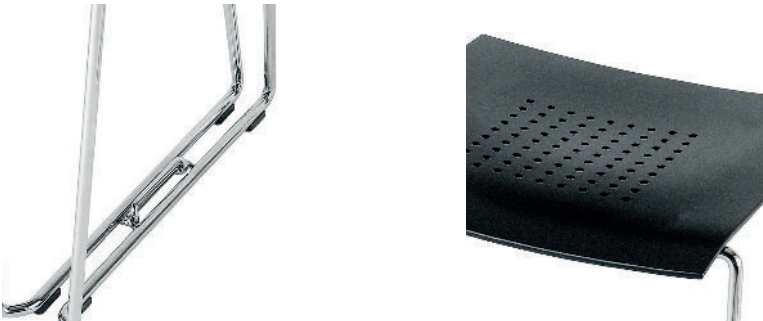
## TILA OVERVIEW

---



---

Chair



---

Details



---

Transport cart "Tila"



---

Transport cart



---

Writing tablet